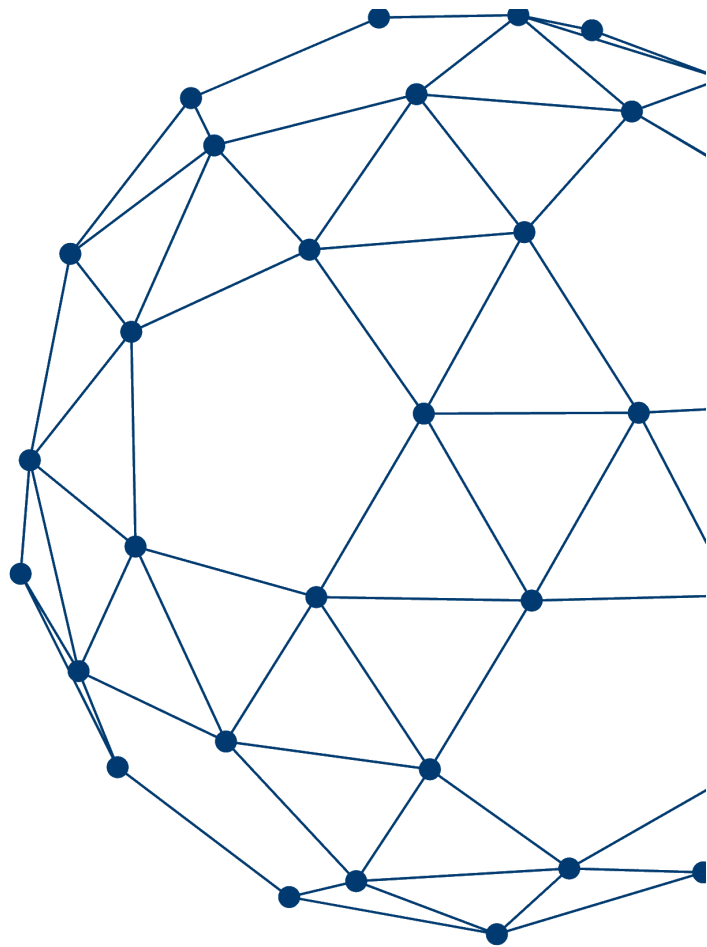


# Workflow

Confidential / under NDA

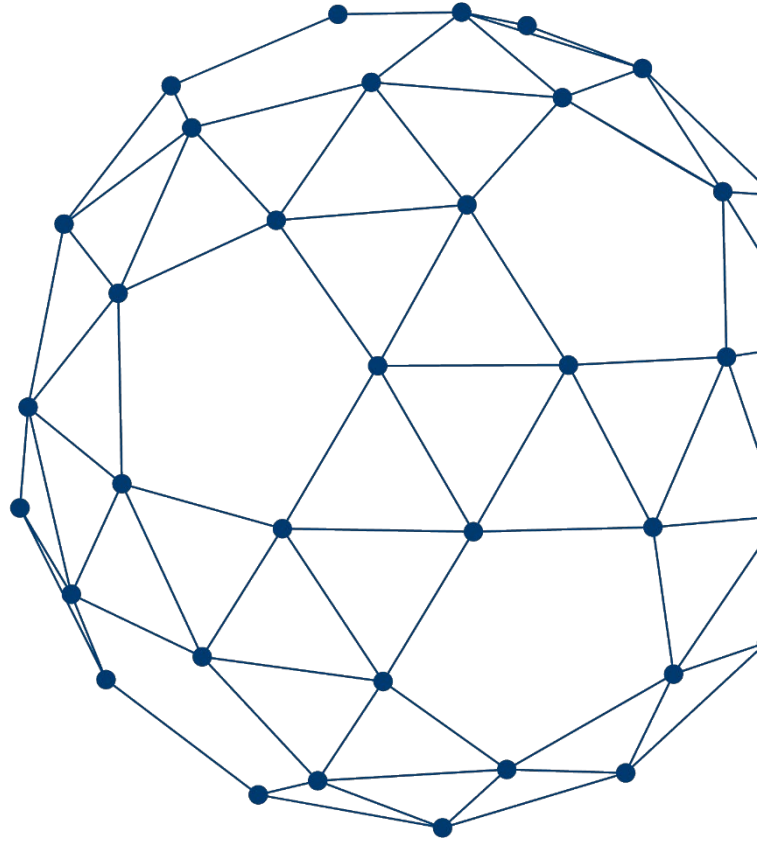
(Not for duplication or distribution)



V1 / Nov 2021

# Table of Contents

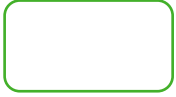
KYC API.....	Error! Bookmark not defined.
Welcome to <b>kompany's</b> KYC API.....	<b>3</b>
Graphic key.....	<b>4</b>
KYC API <b>Company Search and Structured Data</b> .....	<b>5</b>
KYC API <b>Company Monitoring</b> .....	<b>6</b>
Set up our push monitoring service by following the workflow.....	6
KYC API <b>Product Ordering and Retrieval</b> .....	<b>7</b>
KYC API <b>PEP, Sanctions and Adverse Media Screening</b> .....	<b>8</b>
KYC API <b>VAT Verification</b> .....	<b>9</b>
Instantly look up and validate EU VAT numbers .....	9
KYC API <b>TIN Verification</b> .....	<b>10</b>
<b>VAT and TIN comprehensive check</b> .....	<b>10</b>
<b>Contacting Support</b> .....	<b>10</b>
<b>Version History</b> .....	<b>10</b>



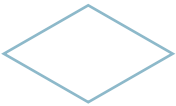
# Welcome to kompany's KYC API

This document outlines the best practices you should apply when using our API. For the best experience, please use this document alongside the API technical documentation. Each flowchart is equivalent to a specific process.

# Graphic key



Process



Decision/If condition



Start/End



KYC API Endpoint



Footnotes

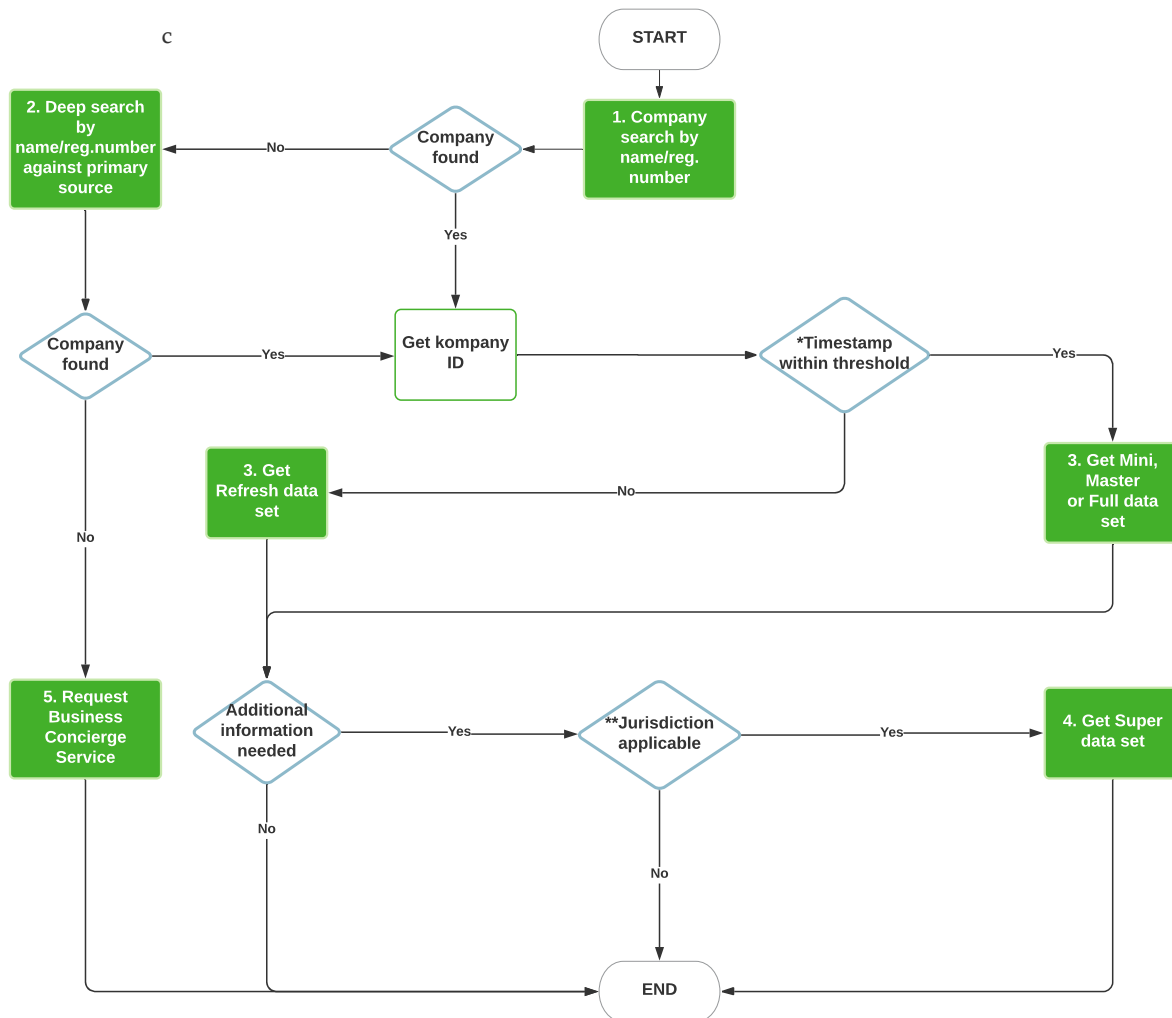


Leading from one step to the other

# KYC API

## Company Search and Structured Data

Direct access to company information in official company registers around the world



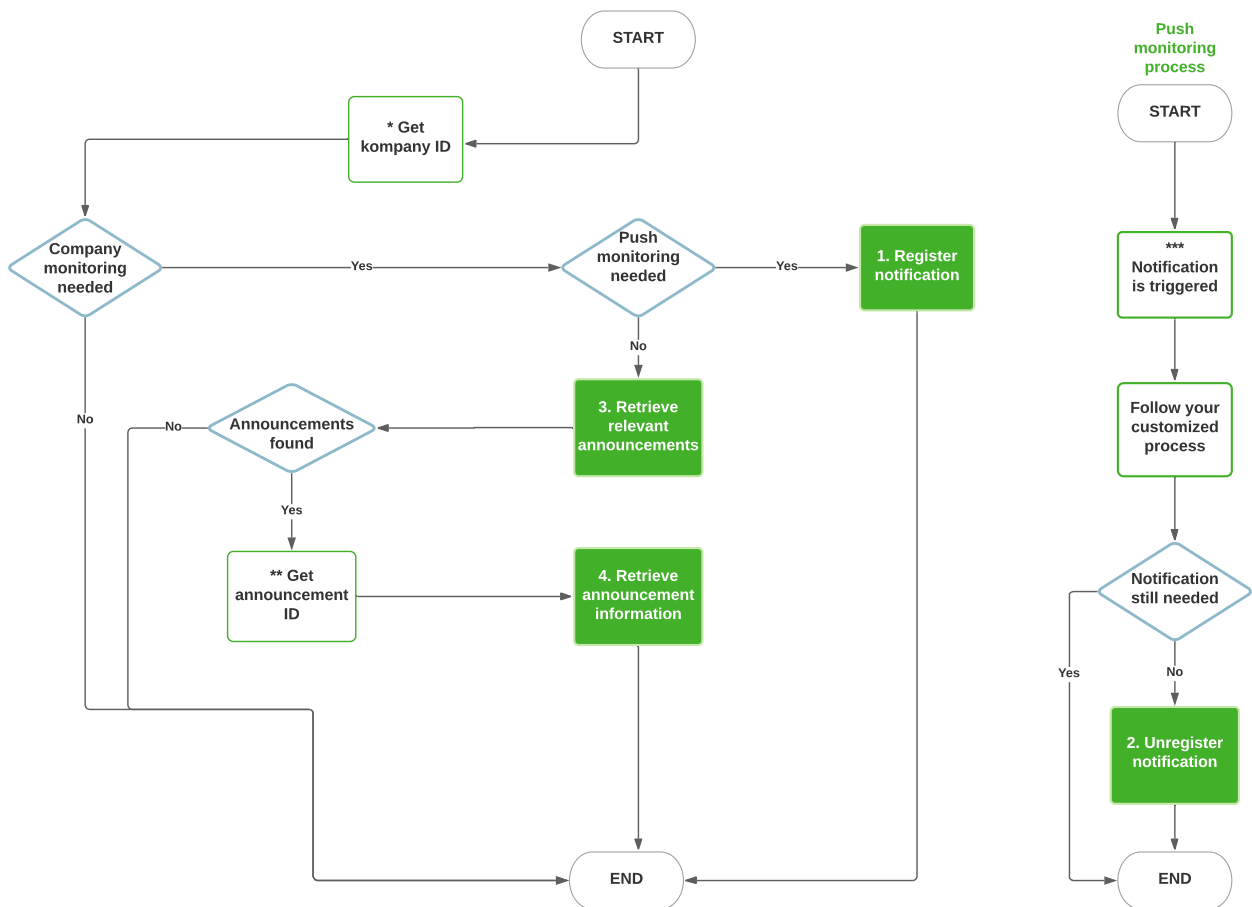
- 1 /api/v1/company/search/name/{country}/{name} or /api/v1/company/search/number/{country}/{number}
- 2 /api/v1/company/deepsearch/name/{country}/{name} or /api/v1/company/deepsearch/number/{country}/{number}
- 3 /api/v1/company/{id}/{dataset}
- 4 /api/v1/company/{id}/super/{countrycode}
- 5 /api/v1/product/order/concierge
- \* Does the UNIX timestamp meet your compliance threshold
- \*\* BREX API Data End Points PDF

# KYC API

## Company Monitoring

Set up our push monitoring service by following the workflow

Please note that this capability is only available for live jurisdictions.

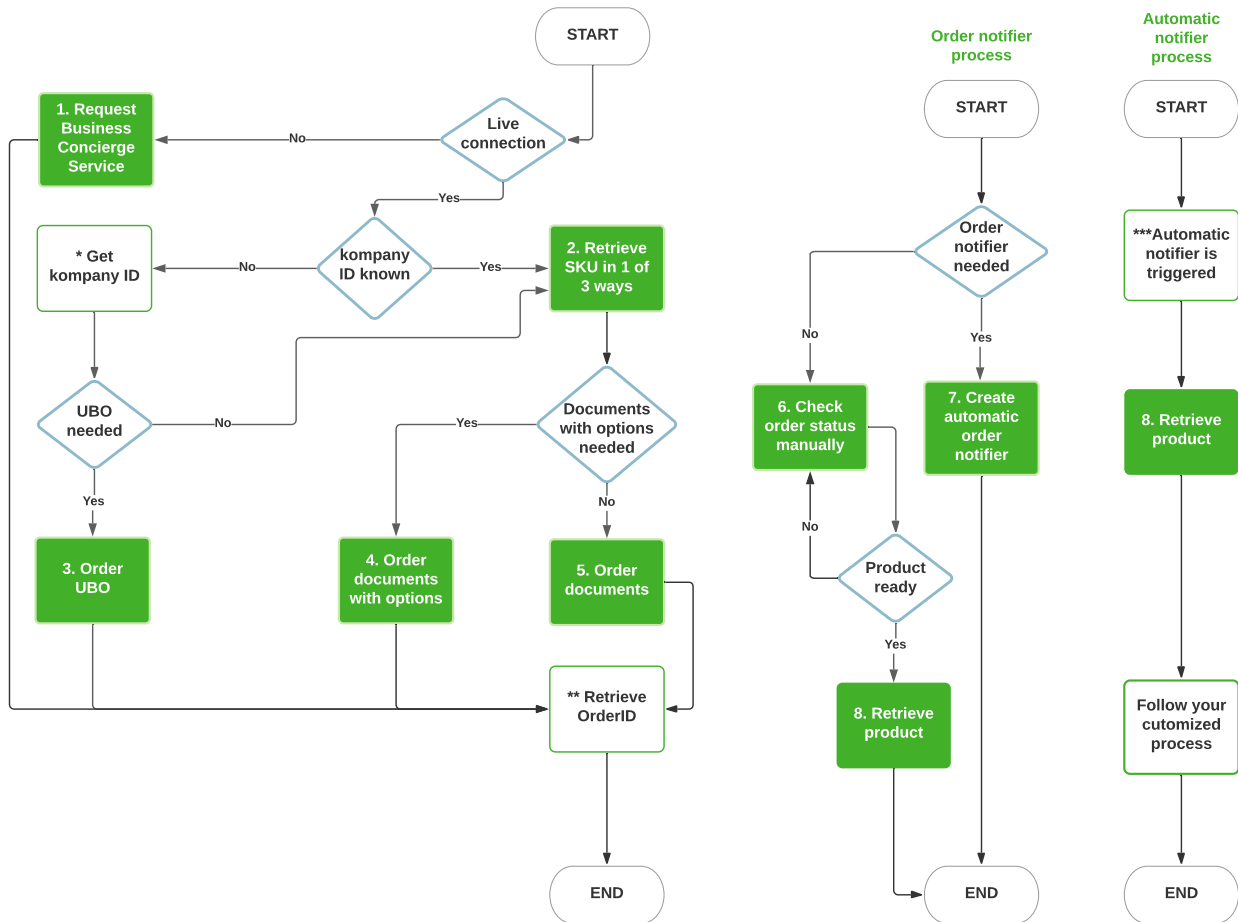


- 1 /api/v1/company/notification/register/{id} – you can build your own logic around this process
- 2 /api/v1/company/notification/unregister/{id}
- 3 /api/v1/company/{id}/announcement/{id}
- 4 /api/v1/company/announcement/{id}
- \* Get kompany ID – Find this at “KYC API Company Search”
- \*\* Get announcement ID – Use the one retrieved from the list of responses from 3
- \*\*\* This means that there was data modification and the call back URL was triggered

# KYC API

## Product Ordering and Retrieval

Order and retrieve official audit proof company fillings



- 1 /api/v1/product/order/concierge
- 2 /api/v1/product/catalog/{country} or /api/v1/product/search/{subjectId} or PDF "API Technical Documentation"
- 3 /api/v1/product/order/ubo
- 4 /api/v1/product/order/{sku}/{option}/{subjectId}
- 5 /api/v1/product/order/{sku}/{subjectId}
- 6 /api/v1/product/status/{orderId}
- 7 /api/v1/product/notifier/{orderId}/{type = GET/POST}/{url}
- 8 /api/v1/product/{orderId}

\* Please refer to "KYC API Company Search"

\*\* Please note that each order from steps 3, 4 and 5 has an Order ID that can be stored and is needed to retrieve documents.

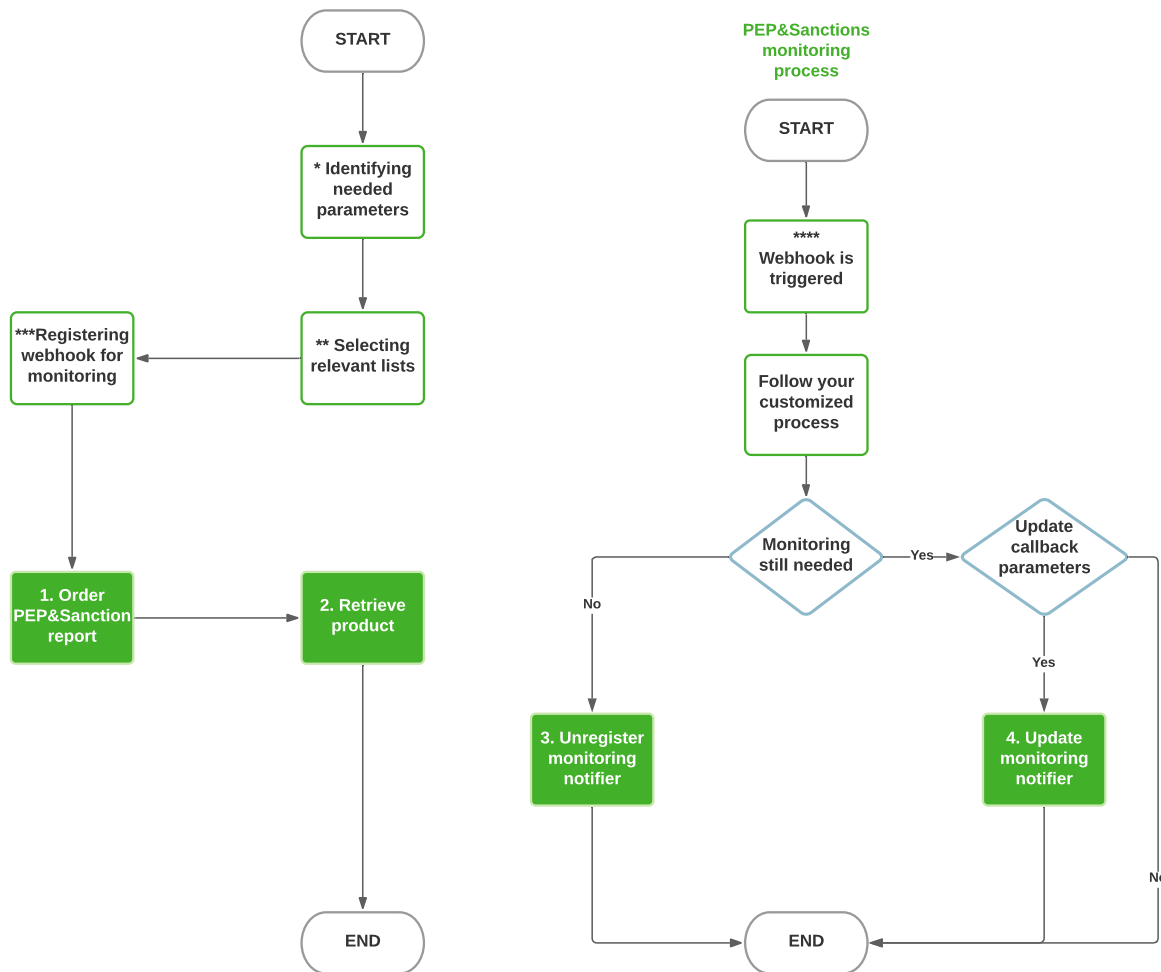
SKU codes do not change

\*\*\* This means that the ordered product is ready

# KYC API

## PEP, Sanctions and Adverse Media Screening

Screen private individuals and legal entities against official sources and adverse media lists



- 1 /api/v1/company/pepsanction/order/{type}/{search}
- 2 /api/v1/pepsanction/retrieve/{id}
- 3 /api/v1/pepsanction/monitor/unregister/{id}
- 4 /api/v1/pepsanction/monitor/update/{id}
- \* choose between searching for a person or a businesses and you can add adjust additional optional parameters accordingly (First name, Last name, Aliases etc.)
- \*\* specify which lists are needed: Adverse Media, PEP lists or Sanctions. By default, all lists are included.
- \*\*\* register a webhook for push monitoring where PEP/Sanctions/Adverse Media updates related to the entities will be sent
- \*\*\*\* This means that there was data modification and the call back URL was triggered

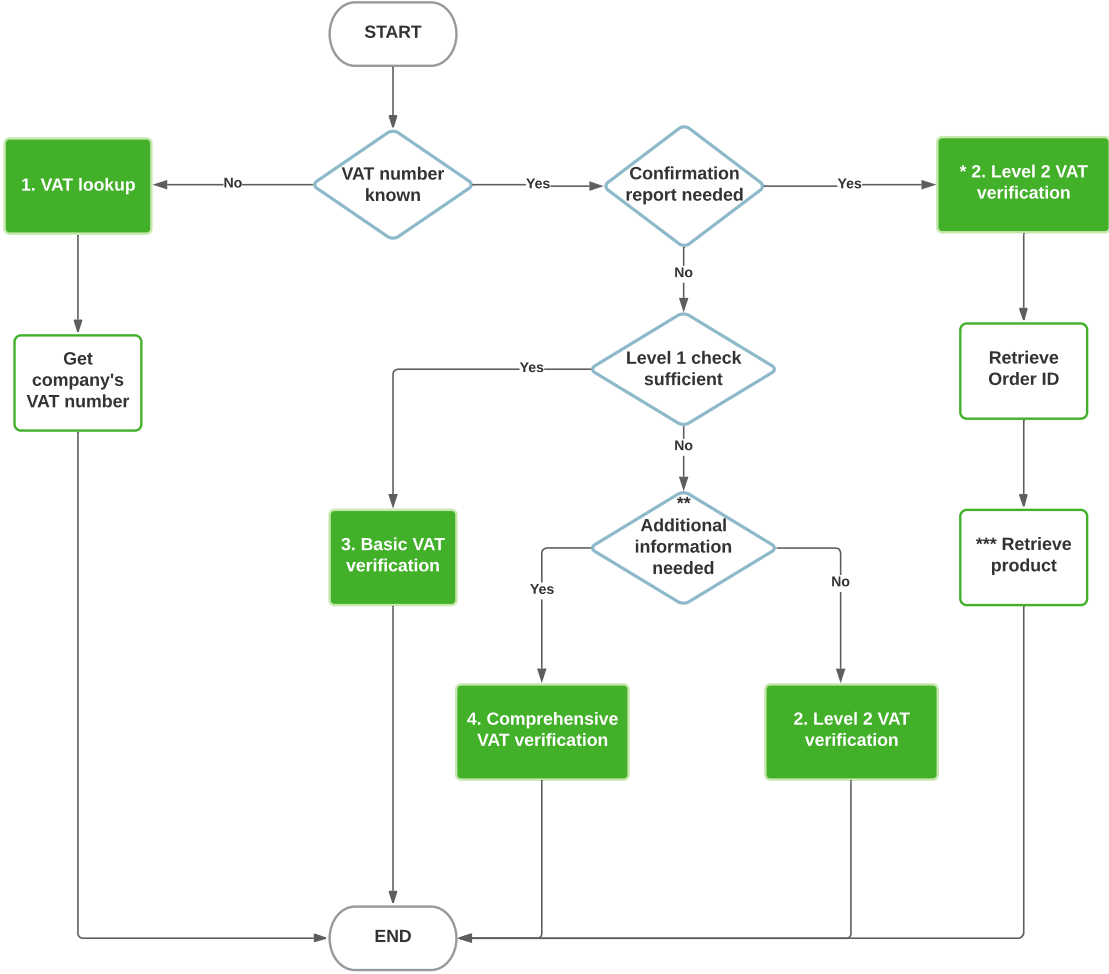


# KYC API

## VAT Verification

Instantly look up and validate EU VAT numbers

1



- /api/v1/vat-verification/lookup/{country}
- 2 /api/v1/vat-verification/leveltwo-check/{country}
- 3 /api/v1/vat-verification/basic-check/{country}
- 4 /api/v1/vat-verification/comprehensive-check/{country}
- \* The parameter for a confirmation report needs to be set to TRUE
- \*\* Comprehensive check contains VAT validation, full data set and a kompany ID
- \*\*\* Please refer to the BREX API Product retrieval Flowchart and follow the process for retrieving product and for setting up order notifiers

# KYC API TIN Verification

Flowchart about the TIN Verification is available on demand, in case of interest please contact Support.

# VAT and TIN comprehensive check

Process description of the logic of VAT and TIN comprehensive check are available on demand, in case of interest please contact Support.

# Contacting Support

Our team of support agents are on hand to answer any questions you have regarding our KYC API. You can reach our agents via email at [apisupport\\_kompany@moodys.com](mailto:apisupport_kompany@moodys.com) or [kompany.com/help](https://kompany.com/help). Alternatively, you can contact your Account Manager directly.

# Version History

- Nov 2021, added chapter KYC API TIN Verification *and* VAT and TIN comprehensive check

